

2007 PORI Goals

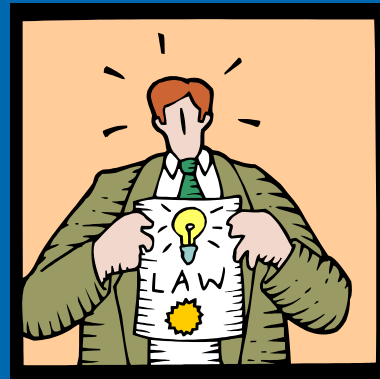


There is much more to be done...

2007 PORI Goals

- Monitor Developer compliance with Reserve DRI
- Monitor Developer compliance with Settlement Agreement for Reserve DRI
- Monitor activities impacting the environment
- Initiate timely communication between residents, developers, city, county, and state

2007 PORI GOALS



Monitor Developer compliance with Reserve
DRI

What can PORI do?

Developer must build 6 Lane Road and Bridge from Traffic Circle to Peacock Boulevard



- PORI will monitor traffic studies
- PORI will monitor proposed Developer changes

St. Lucie West Blvd – I 95 Bridge

- From City of PSL Website:
 - PGA DRI (Verona): Developer responsible for 6 lane divided road from Peacock to Commerce Drive Circle
 - Must widen roadway
 - Must add turn lanes and traffic signals
 - Must widen existing bridge to 3 lanes
 - Must construct second 3 lane bridge
 - Bridge Design has been submitted for approvals

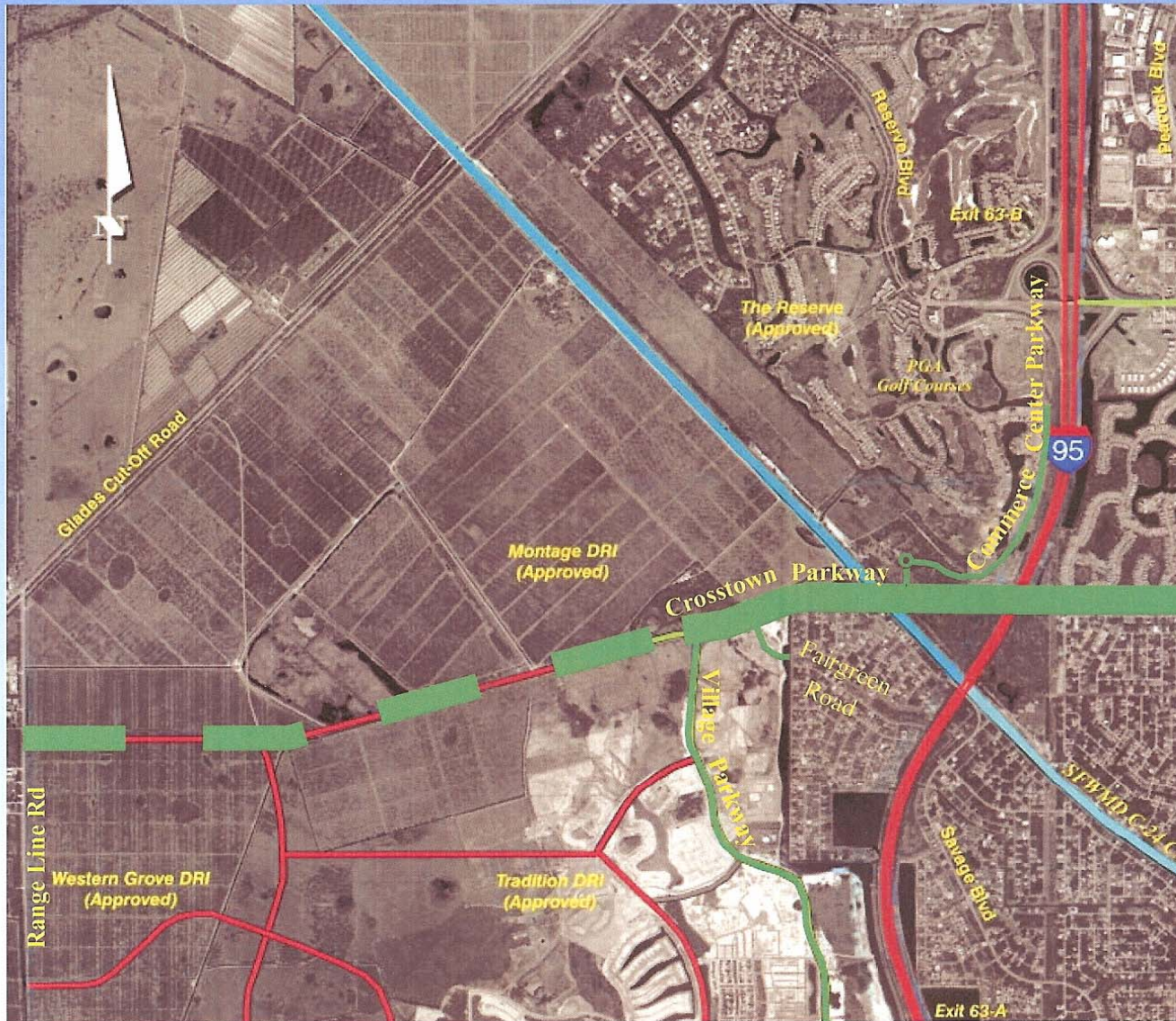
St. Lucie West Blvd – I 95 Bridge

- Current Status
 - Developer wants to reduce improvement to 4 lane road, 4 lane bridge
 - Developer will need to file a NOPC (Notice of Proposed Change) and get approval from Local, State and Federal agencies before proceeding
 - Neither 4 nor 6 lane roadway and bridge will be complete before 2010-2012

St. Lucie West Blvd – I 95 Bridge

- Developer's Justification for DRI Change:
 - Crosstown Parkway will have 6 lane bridge across I 95, 1 mile south of St. Lucie West Boulevard due for completion 6/2009.
 - Crosstown Parkway project not conceived when DRI approved.
 - Crosstown Parkway will connect to Commerce Parkway, south of Verano Circle.
 - There will be an entrance/exit from I 95 at Crosstown Parkway.

Crosstown Parkway West of I95



St. Lucie West Blvd – I 95 Bridge

- Next steps:
 - City requested traffic study to determine whether current traffic flow supports need for 4 or 6 lane bridge
 - Traffic study in progress
 - PORI will monitor traffic studies and hire an independent engineer if necessary

2007 PORI GOALS



Monitor Developer compliance with Settlement
Agreement for Reserve DRI

What can PORI do?

Developer must turnover Master Association

PGA Village POA

December 31, 2007



PORI will sponsor

“Get to Know The Candidates” Forum

What can PORI do?



Developer will construct four 2 acre recreation areas for residents and guests

What can PORI do?



PORI will monitor design, permitting, and construction of

- ~ Island Club
- ~ West Gate Park
- ~ Maidstone Park
- ~ North Park (Former Dreams Park location)

PORI will communicate delays or irregularities to community, developer, county, regional offices

2007 PORI GOALS



Monitor activities impacting the
environment

What can PORI do?



Dr. Bobbie Conti of PORI, is providing support, research, and coaching to residents of Glades & Hendry Counties, who are opposed to the building of the FPL Coal Fired Power Plant.

Coal Fired Power Plant



September 12, 2006

FPL announced plans to build advanced
technology coal fired power plant
in Glades County

Coal Fired Power Plant

- Ultra Supercritical Pulverized Coal Technology –
Twin 980 megawatt units
- Largest coal fired plant in the United States
- 5000 acre site just West of Lake Okeechobee
- 65 miles from Everglades National Park
- 60 ‘Crow miles’ from Reserve/PGA Village
- Plant to use 26 million gallons of water per day
From Upper Floridian Aquifer
- Coal delivered by rail along Reserve/PGA border

Coal Fired Power Plant



Permitting process:

FPL filed a site certification application with the Florida Department of Environmental Protection in 2006

Coal Fired Power Plant

Plans are reviewed by:



Florida Public Service Commission

Florida Department of Environmental Protection

South Florida Water Management District

Environmental Protection Agency

U.S. Army Corps of Engineers

U.S. Fish and Wildlife Service

And other regional, state, and federal agencies

Coal Fired Power Plant

Lake Okeechobee



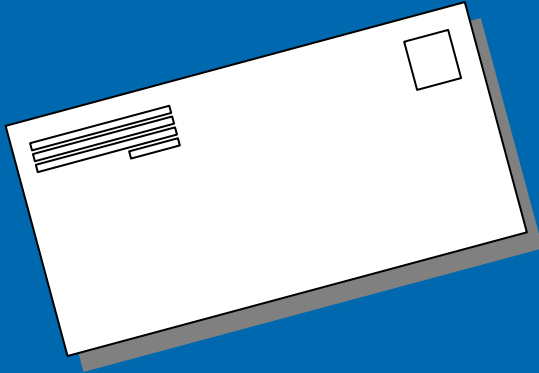
Petitions Filed:

Earthjustice – Challenges Glades County’s determination that site for proposed power plant complies with the existing Land Use Plan

Conservancy of South Florida – Challenges specific inconsistencies with the Comprehensive Plan and Land Development Code

Coal Fired Power Plant

What Do We All Need to Do?



Write to Governor Crist ~~
charlie.crist@myflorida.com

Write to Senator Pruitt ~~
pruitt.ken.web@flsenate.gov

What can PORI do?



Monitor City of Port St. Lucie's plan to expand
Glades Sewer Plant near West Gate
Chairperson: Pamela Hammer

Glades Sewer Plant

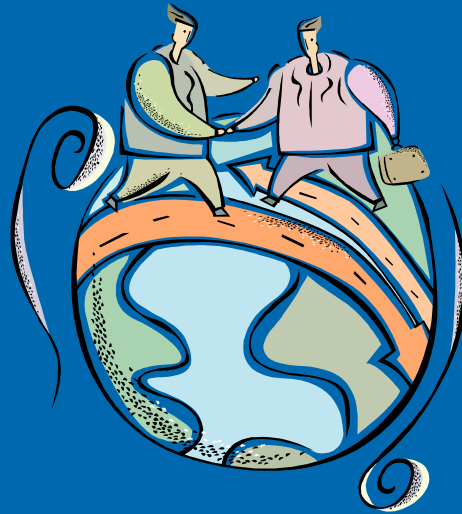


What can PORI do?

Hire Environmental Engineer

Evaluate design to be sure it meets the criteria of the
Glades Sewer Plant Settlement Agreement

2007 PORI GOALS



Initiate timely communication between residents, developers, city, county, and state

How to meet PORI goals?



- Increase PORI membership
- Participate actively on committees
- Hold Town Meetings
- Encourage participation in City and County meetings
- Newsletters, Blast Emails, Community TV Channel, website: www.pori.info

Quality in Changing Times

Questions
Comments
Suggestions

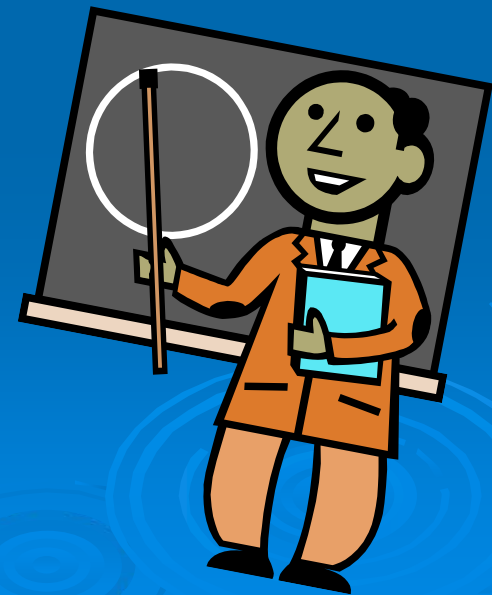


Let's Hear from YOU

Announcements

Seminar: What is Turnover?

- Guest Speaker: Larry Glickman, Sax and Sachs
- Wednesday, March 28, 2007
- Two Sessions:
 - 10:00 AM – Noon
 - 6:00 PM ~ 8:00 PM
- Wanamaker Room
- All PORI members invited



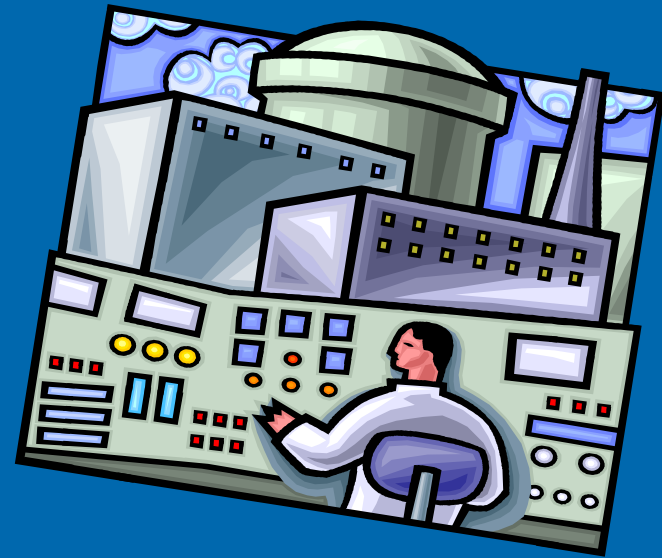
Announcements



PORI Celebration Dinner

- Sunday, April 15, 2007
- Legacy Country Club
- Invitations to be sent to all PORI members this week
- \$20.00 per person, Cash Bar 5:00~6:00PM, Buffet 6:00PM
- Seating limited to first 150 individual PAID reservations
- Checks to Property Owners of the Reserve (PORI)
- c/o Janet Deering, 09629 Fairwood Ct, PSL, FL 34986

Announcements



Nuclear Emergency Plan

- Date, Time, and Location TBA
- All PGA Village/Reserve owners invited

Quality in Changing Times

The PORI BOARD THANKS YOU AGAIN...

For joining PORI

For supporting PORI's initiatives

For encouraging your neighbors to join

For volunteering and participating

And for coming this morning



PORI

QUALITY FOR CHANGING TIMES